

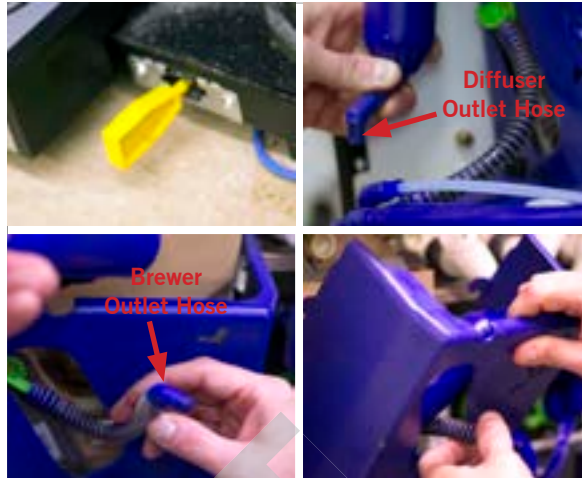
WITTENBORG 9100

Espresso Brewer Cleaning Quick Reference Guide

1. Open Machine

Power Machine & Remove Cover

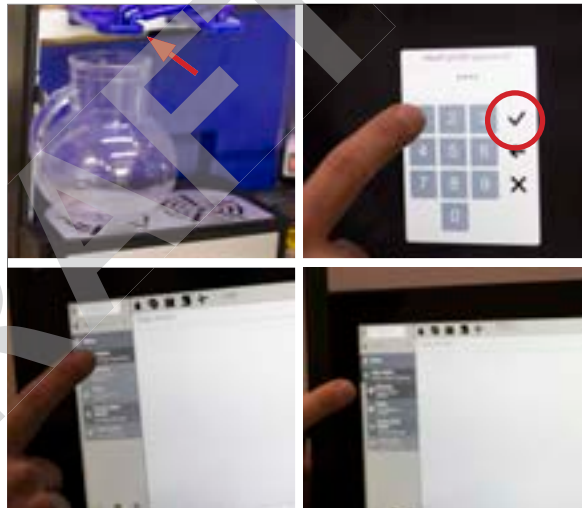
- After inserting key in lock and turning clockwise to open door, insert yellow service key in designated slot at bottom right of machine, and turn 90 degrees to energize with door open.
- Disconnect diffuser outlet hose and brewer outlet hose from dispense head. Then, remove blue cover from brewer and set it aside.



2. Prepare for Cleaning

Position Container & Access Cleaning Menu

- Place a container that can accommodate over 52 ounces of hot water from cleaning under left outlet.
- On screen, use keypad to enter password 1111 then touch checkmark.
- On left side of screen, touch **Daily Action** and then **Cleaning**.



3. Complete Cleaning Cycle

Initiate Cleaning Sequence

- Touch **Espresso Tablet** icon and then touch **OK** to question, "Do you want to start the cleaning process?" Screen will change to **Init Espresso group** and brewer will cycle to ensure it is empty.
- When screen displays "Please input tablet and press confirm," place one tablet (VE7018) or equivalent in brew chamber, and then touch **OK**.
- Screen will show count down of 10 cycles of brewer. At end, display will show success message (Cleaning succeed). Remove yellow service key, reconnect outlets, and replace blue cover. Then, close and lock door.

