

# WITTENBORG 9100

## Daily Filling & Cleaning Quick Reference Guide

### 1. Prepare for Filling

#### Remove Canisters

- Open door and touch X on keypad. Then, push white plastic nozzles up from bottom until square-like cutout shows.
- Using handle, lift up and slide canister out and hook on inside of door. Canisters can also be placed on a flat, clean surface.



### 2. Fill and Clean

#### Load Solubles & Wipe Inside

- Use scissors to cut corner of bag and carefully pour product into canister(s).
- Wipe interior shelf with clean, dry cloth. Reinstall canisters, ensuring that tab on canister(s) fits in corresponding guide. Push canister nozzle down so cutout does not show.

### 3. Fill Hopper

#### Load Beans

- Lift lid back on top of machine and keep open. Fill hopper with coffee beans, and close lids on machine and hopper.



### 4. Clean Parts

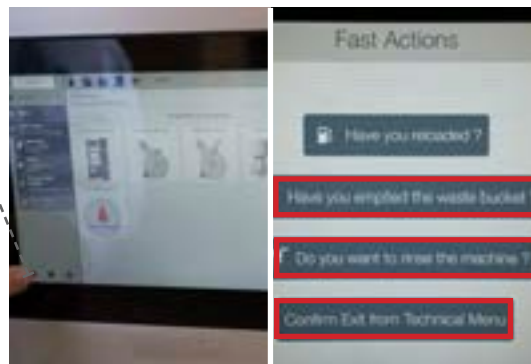
#### Clean Tray Assembly & Waste Bucket

- Remove drip tray from bottom of machine and clean tray with mild soap and warm water. Dry thoroughly and reinstall drip platform.
- Clean grounds container (waste bucket) and return to machine.

### 5. Run Fast Actions

#### Access Fast Actions Screen

- Close door and touch icon in lower left corner to display *Fast Actions* screen.



### 6. Complete Actions

#### Empty Waste Bucket & Rinse

- Touch question about waste bucket and allow machine to process operation. Touch icon in lower left corner of screen and touch question about rinsing. Allow machine to run process and touch icon in lower left corner and then exit from Technical Menu.

**NOTE:** Wipe cup area with cloth and soft cleanser after completing *Fast Actions* tasks.



### Tip

#### Required Supplies

- Make sure to have dish soap, a soft cloth, and paper towels available when cleaning your Wittenborg 9100. Use a dry cloth only to clean the touch screen, never use any cleaning agent.